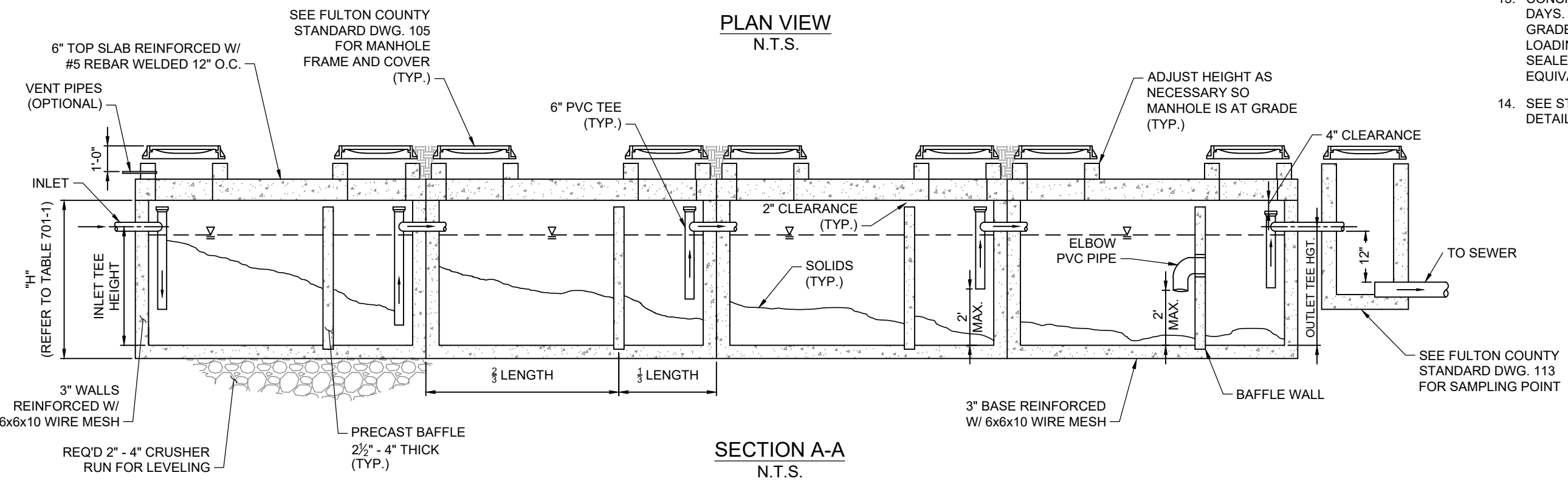
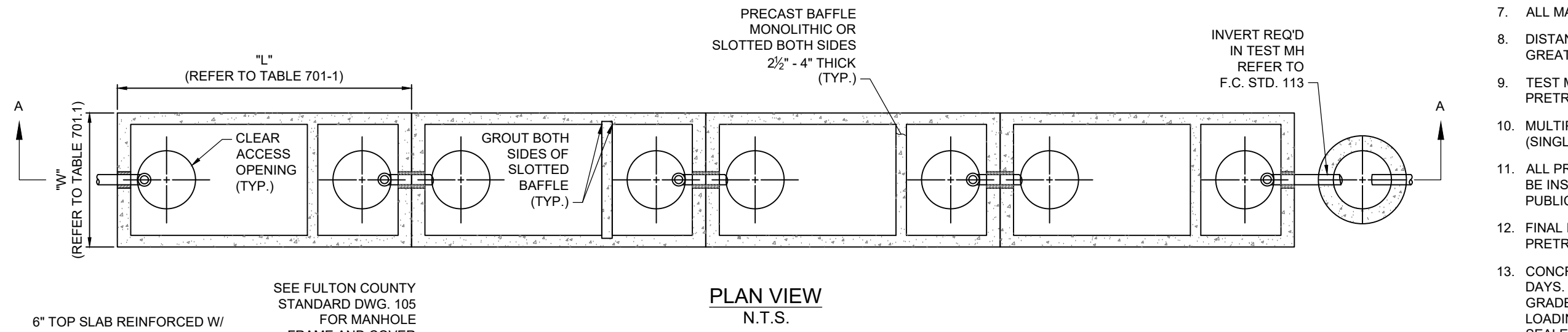


TABLE 701-1					
GALLON CAPACITY	*OUTSIDE DIMENSIONS			INLET TEE HGT.	OUTLET TEE HGT.
	LENGTH, "L"	WIDTH, "W"	HEIGHT, "H"		
1000	8'-6"	5'-8"	4'-11"	4'-4"	4'-2"
1500	11'-1 1/2"	5'-7"	5'-6"	4'-11"	4'-8"
2000	13'-0"	7'-0"	5'-6"	4'-9"	4'-6"
2500	13'-0"	7'-0"	6'-6"	5'-9"	5'-6"

*DIMENSIONS OF PREFAB CONCRETE TANKS MAY VARY BASED ON MANUFACTURER. HOWEVER THE GALLON CAPACITY MUST BE EQUIVALENT TO THE TANK SIZE SPECIFIED FOR INSTALLATION.

- NOTES:
- ANY ALTERNATIVE PRETREATMENT SYSTEMS SHALL BE APPROVED BY WATER AND POLLUTION CONTROL SYSTEM PRIOR TO INSTALLATION
 - USE CONCRETE PREFAB TANKS.
 - NO INTERCEPTOR SHALL BE LESS THAN 1,000 GALLONS WHERE SEATING IS LESS THAN 50 AND NO SINGLE CHAMBER INTERCEPTOR SHALL BE GREATER THAN 3000 GALLONS.
 - FOR RESTAURANTS USE MINIMUM ONE 1515 GALLON TANK PER 100 SEATS.
 - MULTI-CHAMBERED TANKS SHALL BE CONNECTED BY 8" ABS OR PVC PIPE: MIN. 6" PVC ACCEPTED.
 - SAMPLING MANHOLE SHALL BE INSTALLED UNLESS EXCLUDED BY W&PC.
 - ALL MANHOLES MUST ADJUST TO GRADE.
 - DISTANCE BETWEEN MULTIPLE TANKS NO GREATER THAN 12".
 - TEST MANHOLE NO GREATER THAN 6 FEET AFTER PRETREATMENT SYSTEM.
 - MULTIPLE TANKS MUST BE PLACED IN TANDEM (SINGLE LINE).
 - ALL PRETREATMENT SYSTEMS ARE REQUIRED TO BE INSPECTED PRIOR TO BACKFILLING CONTACT PUBLIC WORKS COMMERCIAL TREATMENT.
 - FINAL INSPECTIONS ARE REQUIRED ON ALL PRETREATMENT SYSTEMS PRIOR TO USE.
 - CONCRETE MINIMUM STRENGTH 4000 PSI AT 28 DAYS. STEEL REINFORCEMENT ASTM-A-515.75, GRADE 50, ONE INCH COVER MINIMUM DESIGN LOADING AASHO HS20-44. CONSTRUCTION JOINT SEALED WITH ONE INCH DIA. BUTYL RUBBER OR EQUIVALENT.
 - SEE STANDARD DWG 702 FOR BAFFLE WALL DETAILS.



FULTON COUNTY STANDARD DETAIL 701
GREASE/SOLIDS/OIL INTERCEPTOR
FOUR TANKS IN SERIES

DATE	REVISIONS	DATE	REVISIONS
M/Y	XXX	M/Y	XXX

DGS/DRN/CHKD: XXX
APPROVED: XXX
DATE: XX-X-XX



FULTON COUNTY PUBLIC WORKS
141 PRYOR ST. ATLANTA, GA. 30303
404-612-7400 FAX: 404-224-0498

DRAWING NO.
701

95% SUBMITTAL