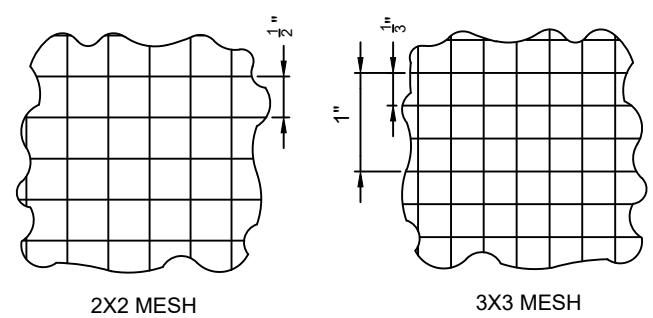
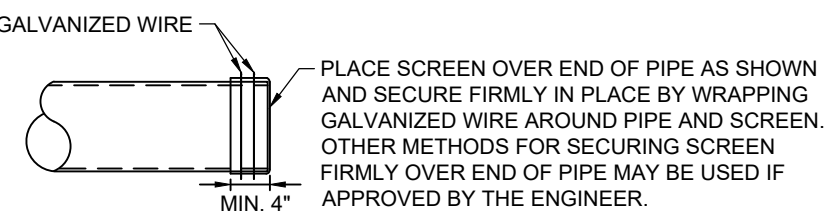
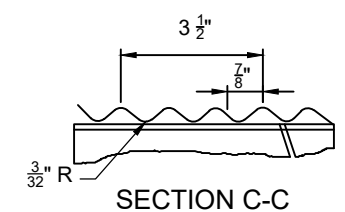
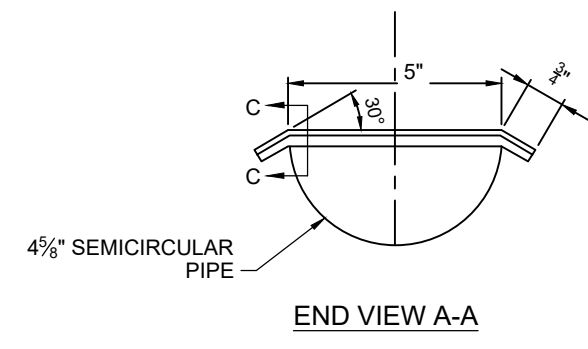
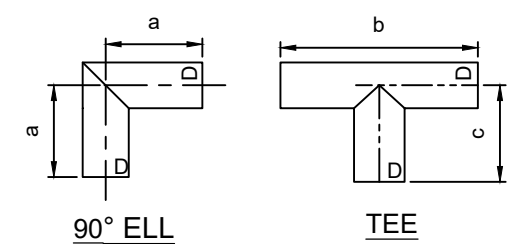


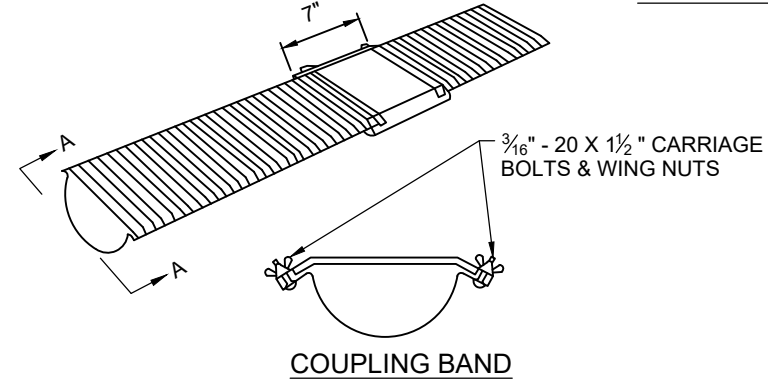
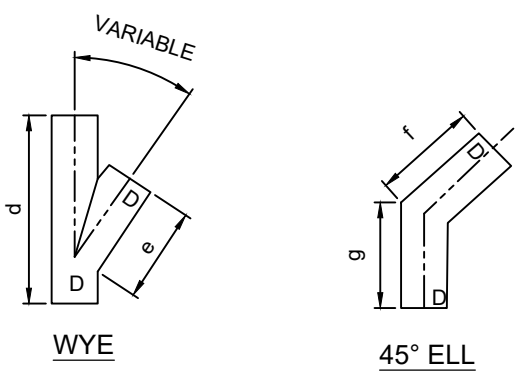
- NOTES:**
- UNDERDRAINS MAY BE PLACED IN SHOULDER AREAS OR AS TRANSVERSE DRAINAGE UNDER PAVEMENT. SEE SPECIAL SECTION AND PLAN AND PROFILE SHEETS FOR SPECIAL CONDITIONS.
 - TRENCH SHALL BE SHAPED WITH SIDES AS NEARLY VERTICAL AS IS PRACTICAL AND WITH A FLAT BOTTOM.
 - MINIMUM GRADIENT FOR UNDERDRAIN PIPE SHALL BE 0.15%.
 - THE LOWER ROW OF PERFORATIONS IN THE PIPE SHALL BE PLACED ABOVE THE BOTTOM OF THE TRENCH AS SHOWN.
 - DEAD ENDS OF PIPE SHALL BE CLOSED WITH METAL CAPS OR CONCRETE PLUGS. OUTFALL ENDS OF PIPE SHALL BE EQUIPPED WITH SCREEN.
 - LATERAL CONNECTIONS SHALL BE MADE WITH SUITABLE STANDARD FITTINGS (ELLS, WYES OR TEES AS DETAILED).
 - THE DIMENSIONS (A THRU G) SHOWN ABOVE ON THE LATERAL CONNECTIONS FOR THE VARIOUS KINDS AND SIZES OF PERFORATED UNDERDRAIN SHALL BE IN AGREEMENT WITH THE MANUFACTURER'S STANDARD PRACTICE.
 - MARKERS: EACH OUTLET END OF THE DRAINAGE SYSTEM SHALL BE MARKED WITH A 5\"/>



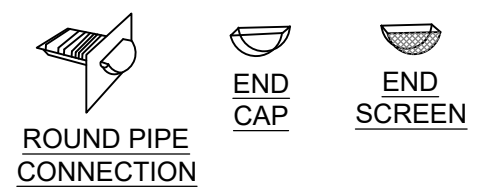
SCREEN TO BE GALVANIZED HARDWARE (WIRE) CLOTH 2X2 OR 3X3 MESH, MIN. 21 GAUGE.



SCREEN FOR UNDERDRAIN N.T.S.



SEMICIRCULAR UNDERDRAIN PIPE



FULTON COUNTY STANDARD DETAIL 520
STANDARD PERFORATED UNDERDRAIN

DATE	REVISIONS	DATE	REVISIONS
M/Y	XXX	M/Y	XXX

DGS/DRN/CHKD: XXX
APPROVED: XXX
DATE: XX-X-XX



FULTON COUNTY PUBLIC WORKS
141 PRYOR ST. ATLANTA, GA. 30303
404-612-7400 FAX: 404-224-0498

DRAWING NO.
520

95% SUBMITTAL