

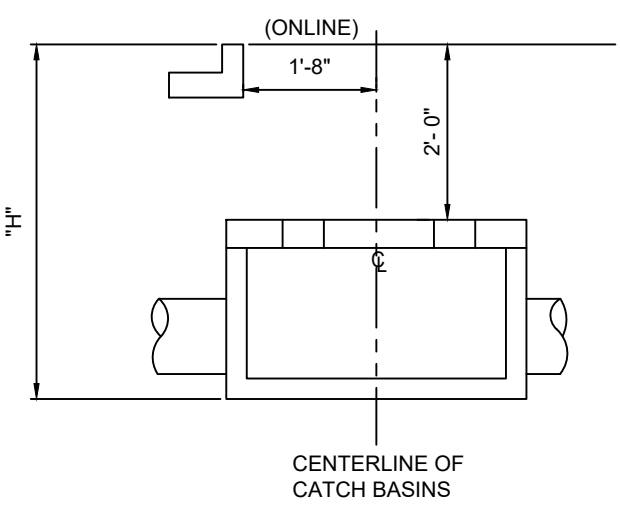
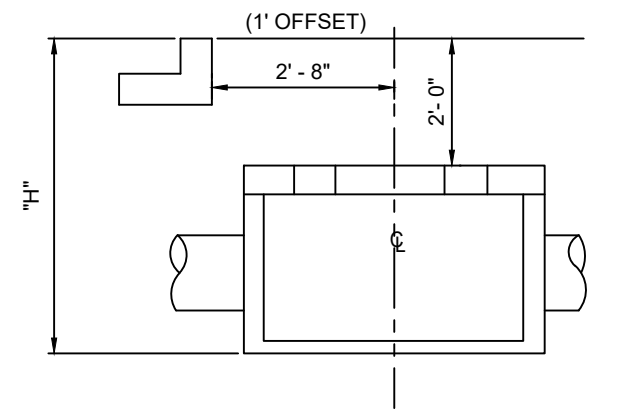
TABLE 507 - 1

BASE HEIGHT	METAL PIPE	CONC. PIPE	*H (MIN.)
4' DIA - 2' - 6"	18"	12"	5" - 0"
3' - 0"	24"	18"	5" - 6"
3' - 6"	30"	24"	6" - 0"
4' - 0"		30"	6' - 6"

\*OTHERWISE BOX MUST BE BUILT OUT OF BRICK

NOTES:

1. CATCH BASIN SHALL BE INSTALLED WITH PIPE OPENING AS SPECIFIED.
2. STEPS TO BE INSTALLED ON 15" VERTICAL SPACING.
3. SEE PRECAST MANHOLE STANDARD FOR SPECIFICATIONS.
4. ALL CONCRETE SHALL BE 4,000 PSI.
5. FOR ROLLED CURB & GUTTER, SEE STD. NO. 503-B FOR BOX LOCATION.



95% SUBMITTAL

FULTON COUNTY STANDARD DETAIL 507  
STANDARD PRECAST ROUND CATCH BASINS

DATE	REVISIONS	DATE	REVISIONS
M/Y	XXX	M/Y	XXX

DGS/DRN/CHKD: XXX  
APPROVED: XXX  
DATE: XX-X-XX



FULTON COUNTY PUBLIC WORKS  
141 PRYOR ST. ATLANTA, GA. 30303  
404-612-7400 FAX: 404-224-0498

DRAWING NO.  
**507**