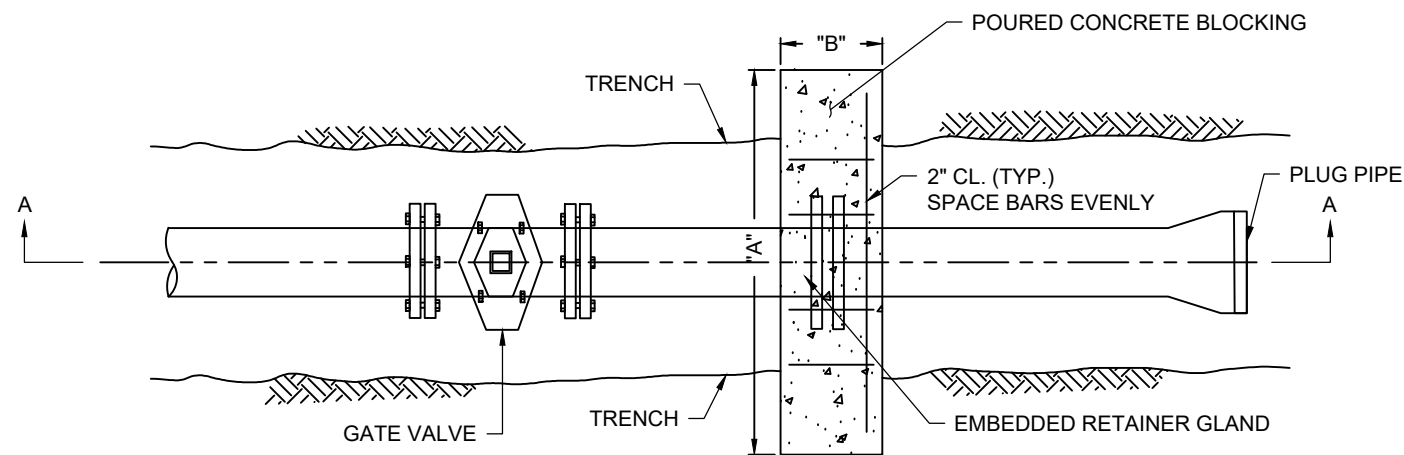


SECTION A



PLAN VIEW

MAIN EXTENSION BLOCKING DETAIL  
NTS

NOTES:

1. STUB OUT MUST BE HYDROSTATICALLY TESTED WITH REST OF WATER MAIN.
2. IN LIEU OF SLIP-JOINT AND COMPRESSION PLUG, M.J. JOINTS MAY BE USED WITH M.J. PLUGS.
3. REFER TO DWG. NO. 127 FOR RODDING RESTRAINTS.
4. ANCHOR BLOCKING DETAIL TO BE USED AT THE END OF ANY COUNTY ROAD WHERE WATER LINE MAY BE EXTENDED AT A FUTURE DATE.
5. ALL CONCRETE TO BE 3000 PSI.
6. ALL STEEL TO BE 60,000 PSI.
7. TERMINATION DETAIL FOR LARGER DIAMETER PIPE SHALL BE DETERMINED FOR EACH PROJECT.

PIPE SIZE (IN.)	"A" (IN.)	"B" (IN.)	"C" (IN.)	REQ'D STEEL (EA. WAY)
8	36	18	36	4 - #4
10	48	18	42	4 - #4
12	54	24	54	4 - #4
16	78	24	60	6 - #4

95% SUBMITTAL

FULTON COUNTY STANDARD DETAIL 124  
STUB OUT AND EXTENSION DETAILS

DATE	REVISIONS	DATE	REVISIONS
M/Y	XXX	M/Y	XXX

DGS/DRN/CHKD: XXX  
APPROVED: XXX  
DATE: XX-X-XX



FULTON COUNTY PUBLIC WORKS  
141 PRYOR ST. ATLANTA, GA. 30303  
404-612-7400 FAX: 404-224-0498

DRAWING NO.  
**124**