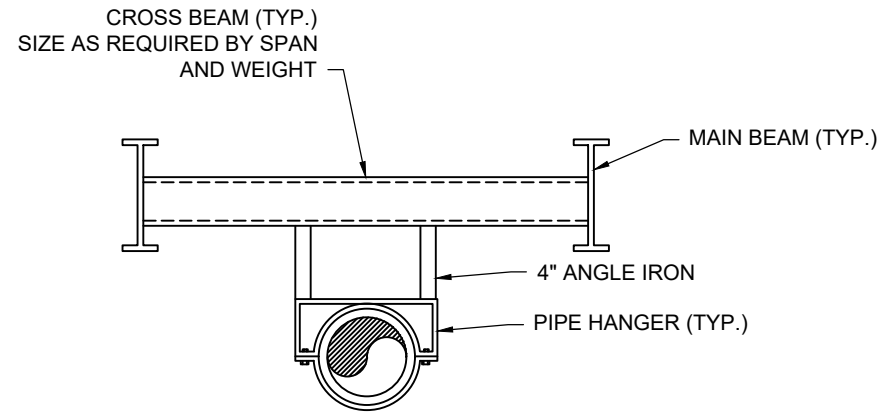
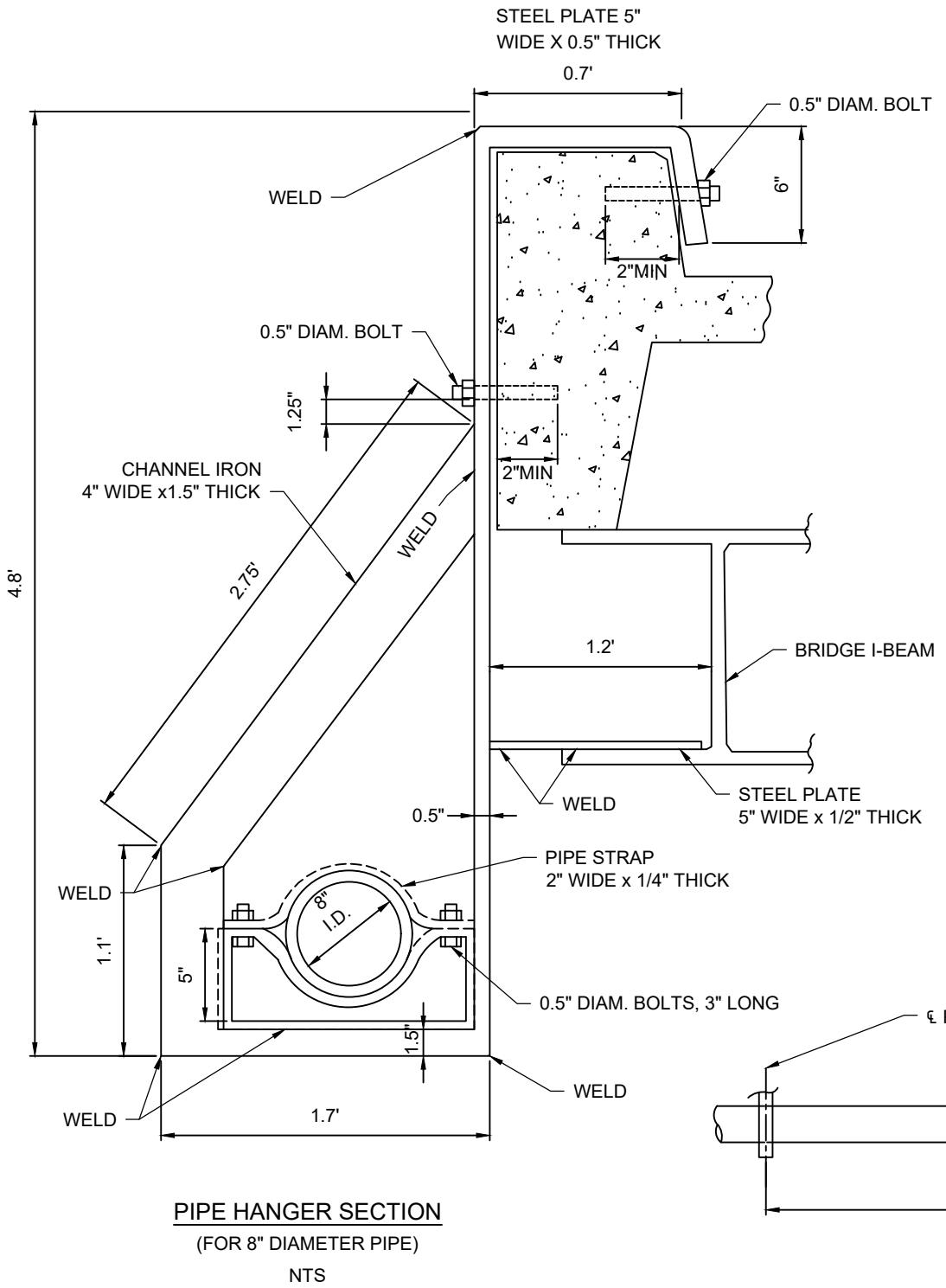


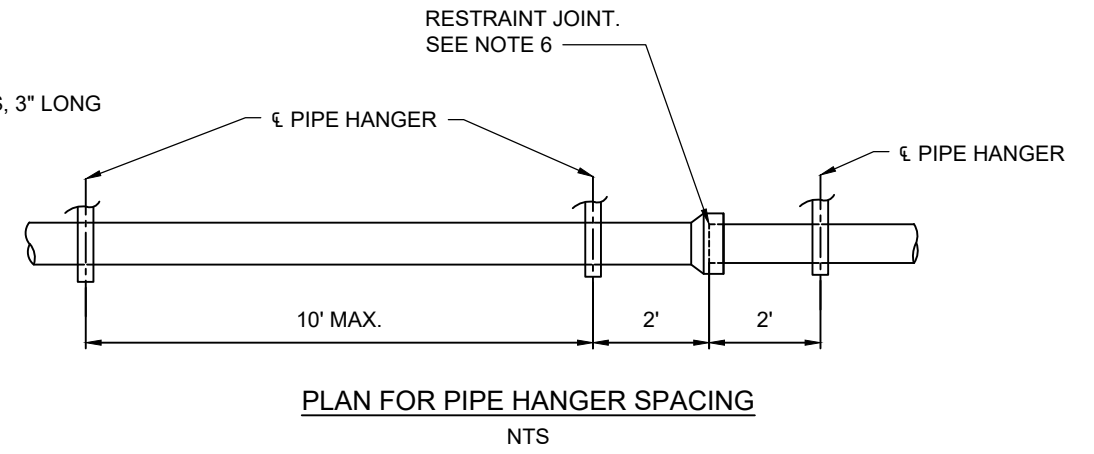
TABLE 119-1 PIPE HANGER DIMENSIONS			
PIPE DIA. (IN.)	"A" (IN.)	"B" (IN.)	"C" (RADIUS) (IN.)
8	6.53	2.00	4.53
12	8.60	2.00	6.60
16	10.70	2.00	6.70



TYPICAL WATER MAIN  
SUPPORT DETAILS  
NTS



PIPE HANGER SECTION  
(FOR 8" DIAMETER PIPE)  
NTS



PLAN FOR PIPE HANGER SPACING  
NTS

- NOTES:**
1. PROVIDE TWO SUPPORTS PER JOINT, TWO FEET FROM JOINT
  2. ENGINEER SHALL DESIGN SUPPORT DETAILS FOR WATER MAINS LARGER THAN 8" IN DIAMETER
  3. STEEL SHALL BE A-36
  4. WELDING SHALL BE E-70XX. ALL WELDS SHALL BE  $\frac{3}{16}$ " FILET WELDS. UNLESS NOTED OTHERWISE. ALL BUTT WELDS SHALL BE  $\frac{1}{4}$ " FULL PENETRATION WELDS.
  5. ALTERNATE DESIGN MAY BE SUBMITTED BY THE ENGINEER FOR APPROVAL BY FULTON COUNTY PUBLIC WORKS DEPARTMENT
  6. RESTRAINT JOINTS EQUAL TO AMERICAN "FLEX-RING" OR "LOK-RING", U.S. PIPE "TR FLEX" OR "HP LOK", CLOW "SUPER-LOCK", OR GRIFFIN "SNAP-LOK", SHALL BE USED ON ALL SUSPENDED PIPES PLUS TWO JOINTS OR 30' MINIMUM ON EITHER SIDE.
  7. PRIMER SHALL BE NO. 1-8 RED PRIMER AND CONFIRM TO GEORGIA D.O.T. ARTICLE 870.2.01 PRIMER SHALL BE APPLIED TO A MINIMUM THICKNESS OF 4 MILS.
  8. PAINT SHALL BE NO. 3-B GREEN, BRUSHING, ROLLER, AIRLESS TYPE AND CONFORM TO GEORGIA D.O.T. ARTICLE 870.2.01 PAINT SHALL BE APPLIED TO A MINIMUM THICKNESS OF 10 MILS.
  9. TWO BOTTOM ASSEMBLIES USED TOGETHER MAY BE REQUIRED FOR SOME INSTALLATIONS.

95% SUBMITTAL

<p>FULTON COUNTY STANDARD DETAIL 119</p> <p>TYPICAL PIPE HANGER AND SUPPORT DETAILS</p>		DATE M/Y XXX	REVISIONS		DATE M/Y XXX	REVISIONS	<p>DGS/DRN/CHKD: XXX</p> <p>APPROVED: XXX</p> <p>DATE: XX-X-XX</p>	<p>FULTON COUNTY PUBLIC WORKS 141 PRYOR ST. ATLANTA, GA. 30303 404-612-7400 FAX: 404-224-0498</p>	<p>DRAWING NO.</p> <p style="font-size: 24pt; font-weight: bold;">119</p>