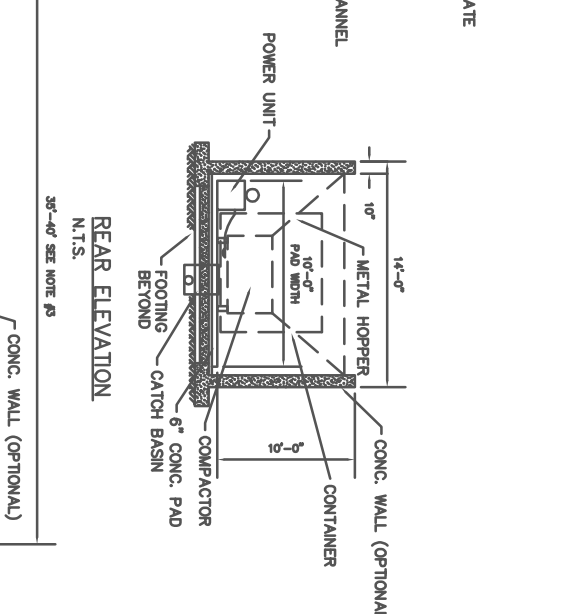
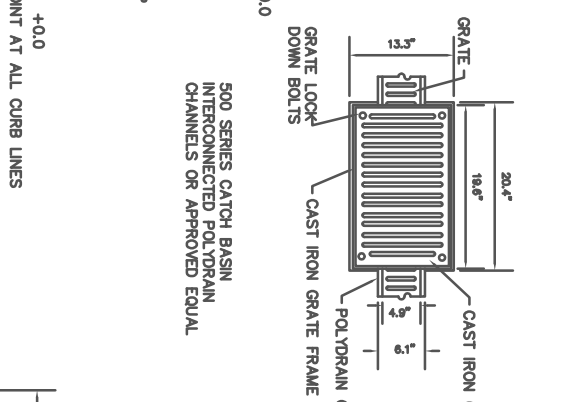
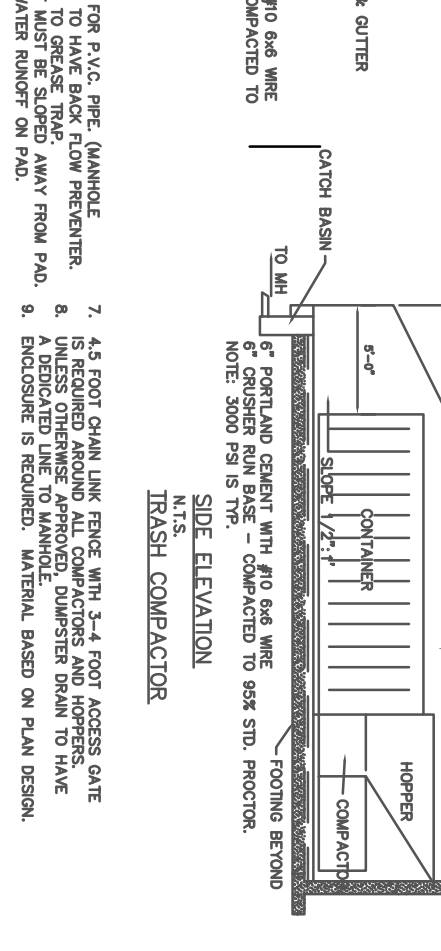


NOTE: CHANNELS MAY ALSO ENTER CATCH BASIN ON SIDES THROUGH PREFORMED KNOCKOUT PANELS  
CAST IRON GRATE FRAME



- NOTES:
1. WATER BIBB REQUIRED WITHIN 50' OF PAD FOR CLEANSING.
  2. APPROVAL FROM HEALTH DEPT. REQUIRED.
  3. COMPACTOR PAD TO BE 10'-0" WIDE AND A LENGTH OF 5'-0" GREATER THAN THE COMBINED LENGTH OF THE COMPACTOR AND CONTAINER.
  4. RUBBER BOOT REQUIRED FOR P.V.C. PIPE (MANHOLE CONNECTOR) WATER BIBB TO HAVE BACK FLOW PREVENTER.
  5. DO NOT CONNECT DRAIN TO GREASE TRAP SURFACE WATER RUNOFF MUST BE SLOPED AWAY FROM PAD.
  6. DO NOT ALLOW STORM WATER RUNOFF ON PAD.
  7. 4.5 FOOT CHAIN LINK FENCE WITH 3'-4 FOOT ACCESS GATE IS REQUIRED AROUND ALL COMPACTORS AND HOPPERS, UNLESS OTHERWISE APPROVED. DUMPSTER DRAIN TO HAVE A DEDICATED LINE TO MANHOLE.
  8. ENCLOSURE IS REQUIRED. MATERIAL BASED ON PLAN DESIGN.



FULTON COUNTY STANDARD DETAIL 703  
TRASH COMPACTOR  
AND  
DUMPSTER PAD DETAILS

DATE	REVISIONS	DATE	REVISIONS
8/20/81	NRR		

DGS/DRN/CHKD: JM  
APPROVED: REW  
DATE: 12-2-05

FULTON COUNTY PUBLIC WORKS  
141 PRYOR ST. ATLANTA, GA. 30303  
404-612-7400 FAX: 404-224-0498

DRAWING NO. 703