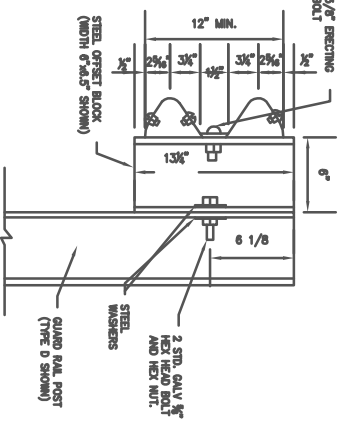
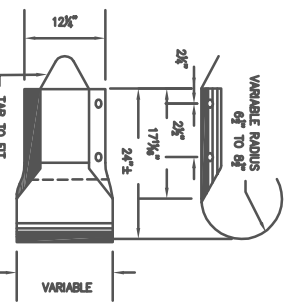


NOTE: OFFSET BLOCKS MAY BE WOOD OR STEEL.
GUARD RAIL SPLICE AT POST
 N.T.S.

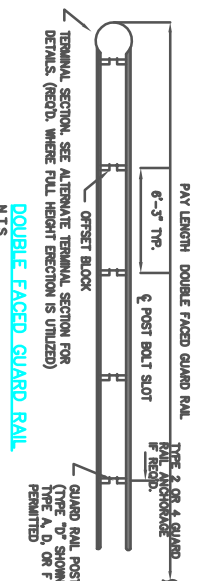


- GENERAL NOTES:**
1. GUARD RAIL, ITS FITTINGS, PARTS, ETC., ARE TO BE IN ACCORDANCE WITH STATE HIGHWAY DEPARTMENT OF GEORGIA STANDARD SPECIFICATIONS AND/OR SPECIAL PROVISIONS.
 2. FOR DETAILS OF POSTS & OFFSET BLOCKS SEE GA. STANDARD 4011.
 3. FOR DETAILS OF GUARD RAIL ANCHORAGES SEE GEORGIA STANDARD 4012.
 4. FOR LOCATION OF GUARD RAIL SEE APPLICABLE LOCATION STANDARDS.
 5. ON PROJECTS WHERE GUARD RAIL CONNECTIONS AT BRIDGE END HAVE BEEN PLACED ON PREVIOUS CONTRACTS THE END PANEL MAY BE SHORTENED BY CUTTING OR SHEARING TO FIT EXISTING STRUCTURE.
 6. WHEN GUARD RAIL IS REQUIRED ON CURVES WITH RADI LESS THAN 150' PRECURVED RAIL WILL BE REQUIRED.
 7. UNIT PRICE FOR GUARD RAIL TO INCLUDE OFFSET BLOCKS, POST, BACK-UP PLATES WHERE REQ'D, BOLTS, NUTS, WASHERS, TERMINAL SECTIONS, ADDITIONAL POST WHERE REQUIRED AND REMOVAL AND REPLACEMENT OF PORTIONS OF MEDIAN PAVING, SPILLWAYS OR CATCH BASINS WHERE NECESSARY.
 8. ALL DIMENSIONS ARE SUBJECT TO MANUFACTURING TOLERANCES.
 9. STANDARD NET LENGTH OF RAIL ELEMENTS MAY BE EITHER 12'-6" OR 25'-0". THESE LENGTHS SHALL BE ARRANGED TO PROVIDE AS NEARLY AS POSSIBLE THE OVERALL LENGTH ORDERED BY THE ENGINEER FOR ANY ONE LOCATION.

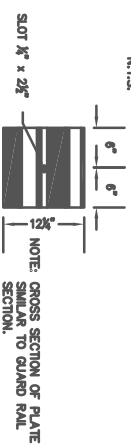
STANDARD TERMINAL SECTION
 N.T.S.



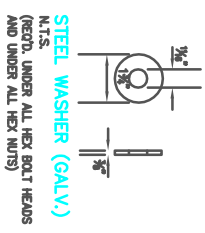
ALTERNATE TERMINAL SECTION
 N.T.S.



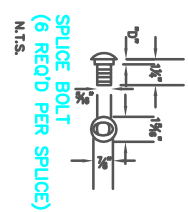
DOUBLE FACED GUARD RAIL
 N.T.S.



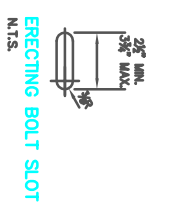
BACK-UP PLATE
 N.T.S.



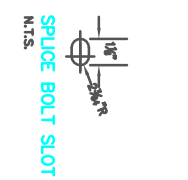
STEEL WASHER (GALV.)
 N.T.S.



SPLICE BOLT
 (6 REQ'D PER SPLICE)
 N.T.S.



ERECTING BOLT SLOT
 N.T.S.



SPLICE BOLT SLOT
 N.T.S.



**3/8\"/>
 N.T.S.**



RECTANGULAR WASHER
 (GALV) (8 GAUGE)
 N.T.S.

FULTON COUNTY STANDARD DETAIL 320
 BEAM TYPE GUARD RAIL

DATE	REVISIONS	DATE	REVISIONS
6-08	JJM		

DGS/DJN/CHKD-CMS
 APPROVED: _____
 DATE: 12-02-05



FULTON COUNTY PUBLIC WORKS
 141 PRYOR ST. ATLANTA, GA. 30303
 404-612-7400 FAX: 404-730-6325

DRAWING NO. 320