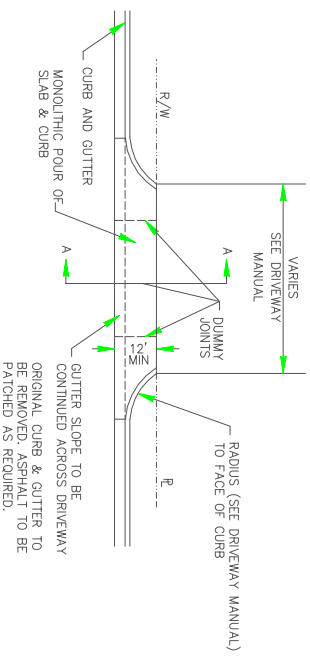
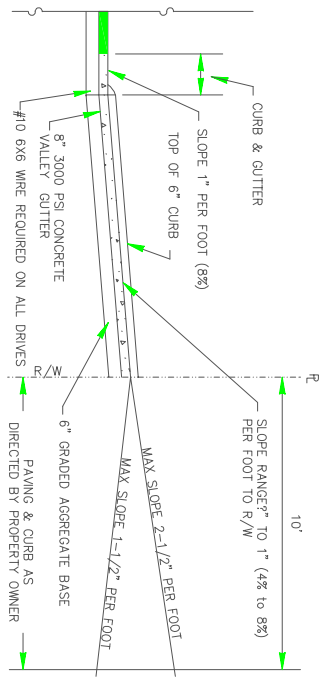


DRIVEWAY/INTERSECTION USE	WIDTH IN FEET		MIN. RADIUS IN FEET
	MIN.	MAX.	
RESIDENTIAL DRIVEWAY (1-3 UNITS)	14	18	5' (RADIUS OR FLARE)
RESIDENTIAL STREET (TWO LANES)	20	25	30'
COMMERCIAL DRIVEWAY	24	30	35'
WHEN DESIGNED FOR TRUCKS	24	40	75'
TWO-LANE DIVIDED DRIVEWAY	SEE DETAIL 305		30'
FOUR-LANE DIVIDED DRIVEWAY	SEE DETAIL 305		30'



COMMERCIAL DRIVEWAY PLAN VIEW
N.T.S.

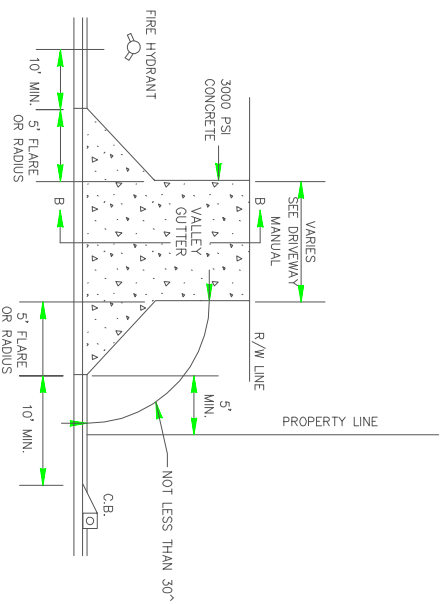


SECTION A-A
N.T.S.

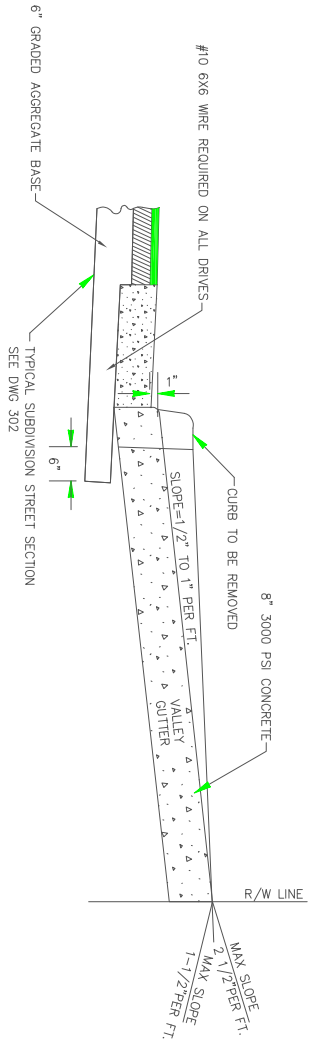
CONCRETE DRIVES:

RESIDENTIAL	COMMERCIAL
6" CONCRETE VALLEY GUTTER	8" CONCRETE VALLEY GUTTER
4" CONCRETE DRIVEWAY	8" CONCRETE DRIVEWAY

NOTE: PUBLIC STREET INTERSECTIONS SHALL BE ASPHALT



RESIDENTIAL DRIVEWAY (1-3 UNITS)
N.T.S.



SECTION B-B
N.T.S.

*NOTE:
MAXIMUM DRIVEWAY GRADES SHOWN ABOVE ARE INTENDED FOR RESIDENTIAL DRIVEWAYS WHERE FLATTER GRADES ARE NOT FEASIBLE. GRADES FOR COMMERCIAL DRIVEWAYS OR FOR TRUCKS SHALL NOT BE GREATER THAN 11% UNLESS SPECIFIED OTHERWISE.

FULTON COUNTY STANDARD DETAIL 304
DRIVEWAY DETAILS

DATE	REVISIONS	DATE	REVISIONS	DGS/DRN/CHKD/REB	FULTON COUNTY	FULTON COUNTY PUBLIC WORKS	DRAWING NO.
8/08	NRR			APPROVED: REW		141 PRYOR ST. ATLANTA, GA. 30303	MAIN 304
				DATE: 12-2-05		404-612-7400 FAX: 404-224-0498	