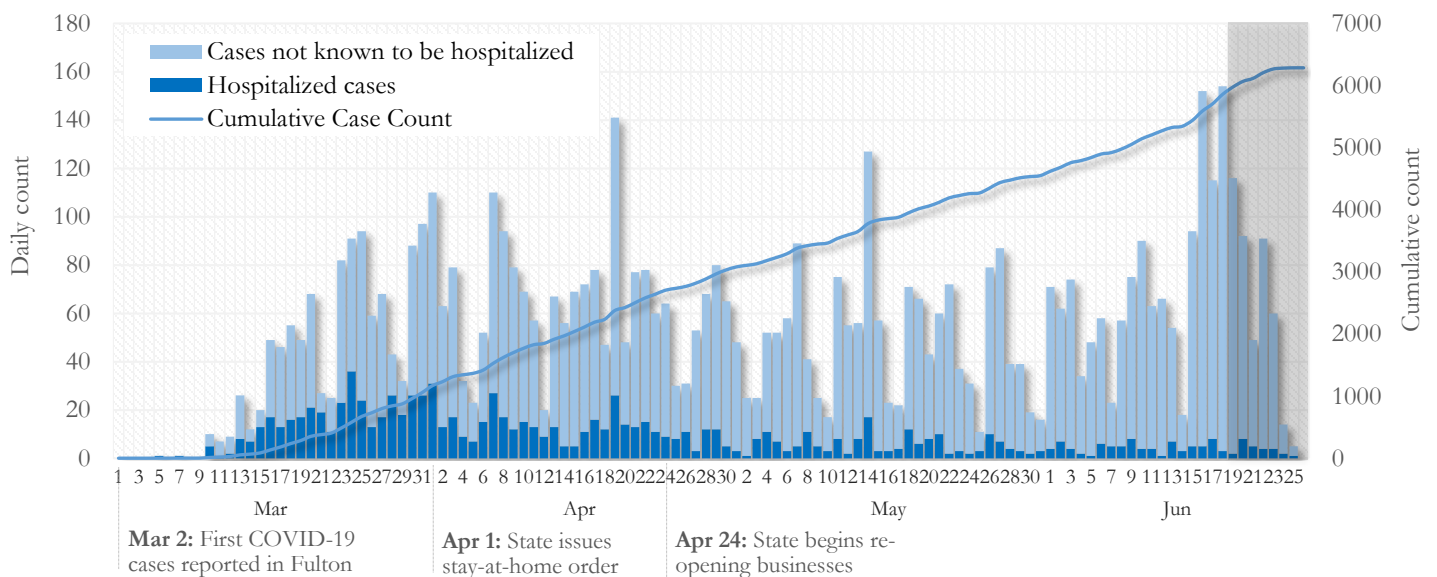


## SUMMARY

- As of June 26, 2020, Fulton has recorded **6,285** cases of the 2019 novel coronavirus (COVID-19) and **311** deaths.
- The central portion of the county (Atlanta metro) accounts for 46% of the cumulative case count while the northern and southern parts of the county together account for 45% of the COVID-19 cumulative case count in the county.
- By city, cumulative COVID-19 diagnoses rates range from 206.8 per 100,000 persons (Johns Creek) to 1092.6 per 100,000 persons (Union City).
- Among all persons diagnosed with COVID-19 in Fulton County, 16.4% required hospitalization and 4.9% died.
- Residents and staff of long-term care facilities account for 19% of COVID-19 diagnoses and 48% of COVID-19 deaths in Fulton County (6/26/20).

## Daily and Cumulative COVID-19 diagnoses in Fulton County, GA (6/26/20)



\*Counts shown reflect the number of confirmed cases as of 9:00am on 6/26/20 using the date of first positive sample collection. Where date of sample collection was not available or missing, the date of report creation in GA SENDSS was used instead. **Note:** All data reported are preliminary and subject to change. Delays in data reporting may cause changes in data counts, particularly in the shaded portion.

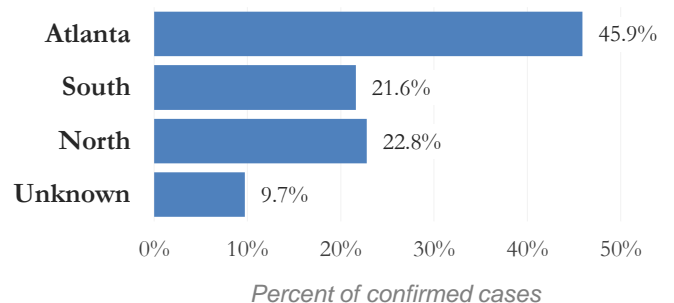
## DISTRIBUTION OF COVID-19 DIAGNOSES BY REGION

**New cases:** 43% of the new COVID-19 cases diagnosed in the past 2 weeks occurred in Atlanta while 30% and 18% occurred in the Northern and Southern regions of the county respectively.

Fulton Region	% Cumulative count	% New cases*
Atlanta	45.9%	43.2%
North <sup>1</sup>	22.8%	30.1%
South <sup>2</sup>	21.6%	18.0%
Unincorporated/Unknown	9.7%	8.7%

<sup>1</sup>Includes all Fulton County cities north of Atlanta metro (Alpharetta, Milton, Johns Creek, Roswell, Sandy Springs, Mountain Park) | <sup>2</sup>Includes all cities south of Atlanta (College Park, Chattahoochee Hills, East Point, Hapeville, Palmetto, South Fulton, Fairburn, and Union City) \***New cases:** Cases diagnosed in the past 2 weeks only (using the date of sample collection).

**Fig. 2. Distribution of COVID 19 cases by Region (6/26/20)**

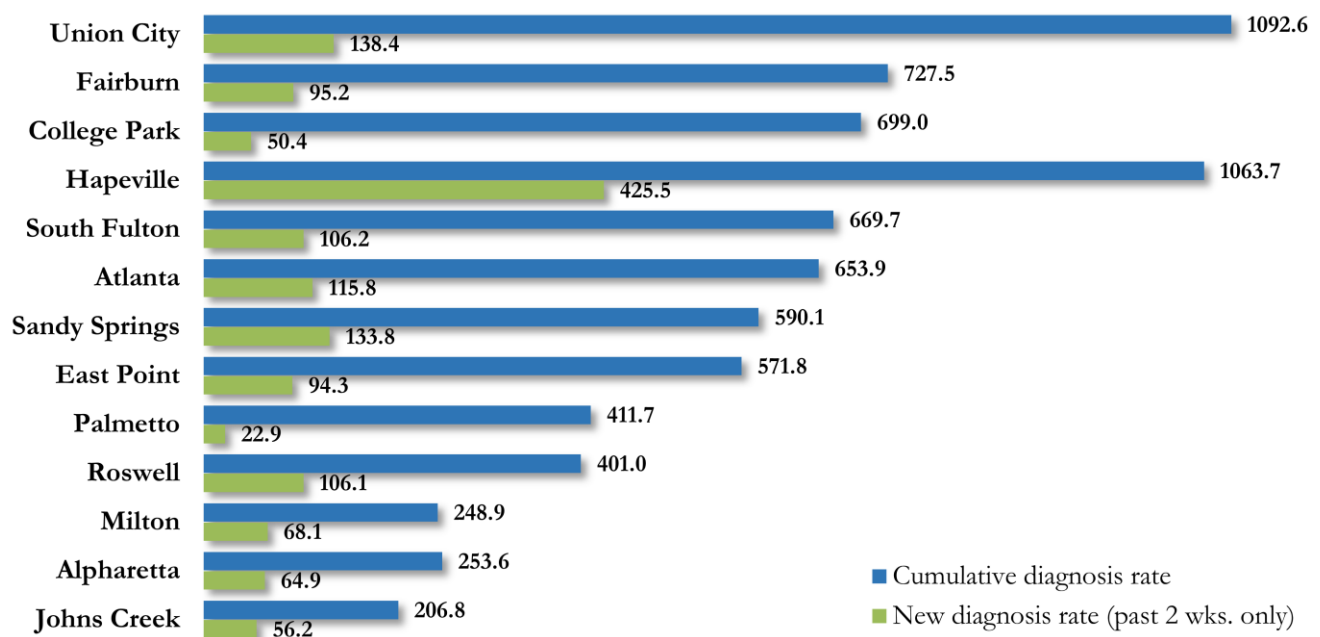


## COVID-19 CASE COUNTS AND RATES BY CITY

	Prior (6/24/20)	Current Total (6/26/20)			New Cases (Period: 5/22/20 – 6/19/20) <sup>1</sup>			
	Count	Count	%	Cum. Rate <sup>2</sup>	Ist 14 d.	Last 14 d.	% change <sup>3</sup>	Rate <sup>4</sup> (last 14 d).
Atlanta	2738	2885	45.9%	653.9	326	511	↑ 56.7%	115.8
South Fulton	605	637	10.1%	669.7	47	101	↑ 114.9%	106.2
Sandy Springs	589	622	9.9%	590.1	91	141	↑ 54.9%	133.8
Roswell	359	378	6.0%	401.0	36	100	↑ 177.8%	106.1
East Point	188	200	3.2%	571.8	17	33	↑ 94.1%	94.3
Johns Creek	164	173	2.8%	206.8	14	47	↑ 235.7%	56.2
Union City	222	229	3.6%	1092.6	20	29	↑ 45.0%	138.4
Alpharetta	154	164	2.6%	253.6	15	42	↑ 180.0%	64.9
Milton	89	95	1.5%	248.9	10	26	↑ 160.0%	68.1
Fairburn	103	107	1.7%	727.5	14	14	-	95.2
College Park	96	97	1.5%	699.0	<10	<10	↑ 16.7%	50.4
Palmetto	17	18	0.3%	411.7	<10	<10	-	22.9
Hapeville	70	70	1.1%	1063.7	19	28	↑ 47.4%	425.5
Mountain Park	0	0	0.0%	-	0	0	-	0.0
Unknown	565	610	9.7%	-	52	97	-	-

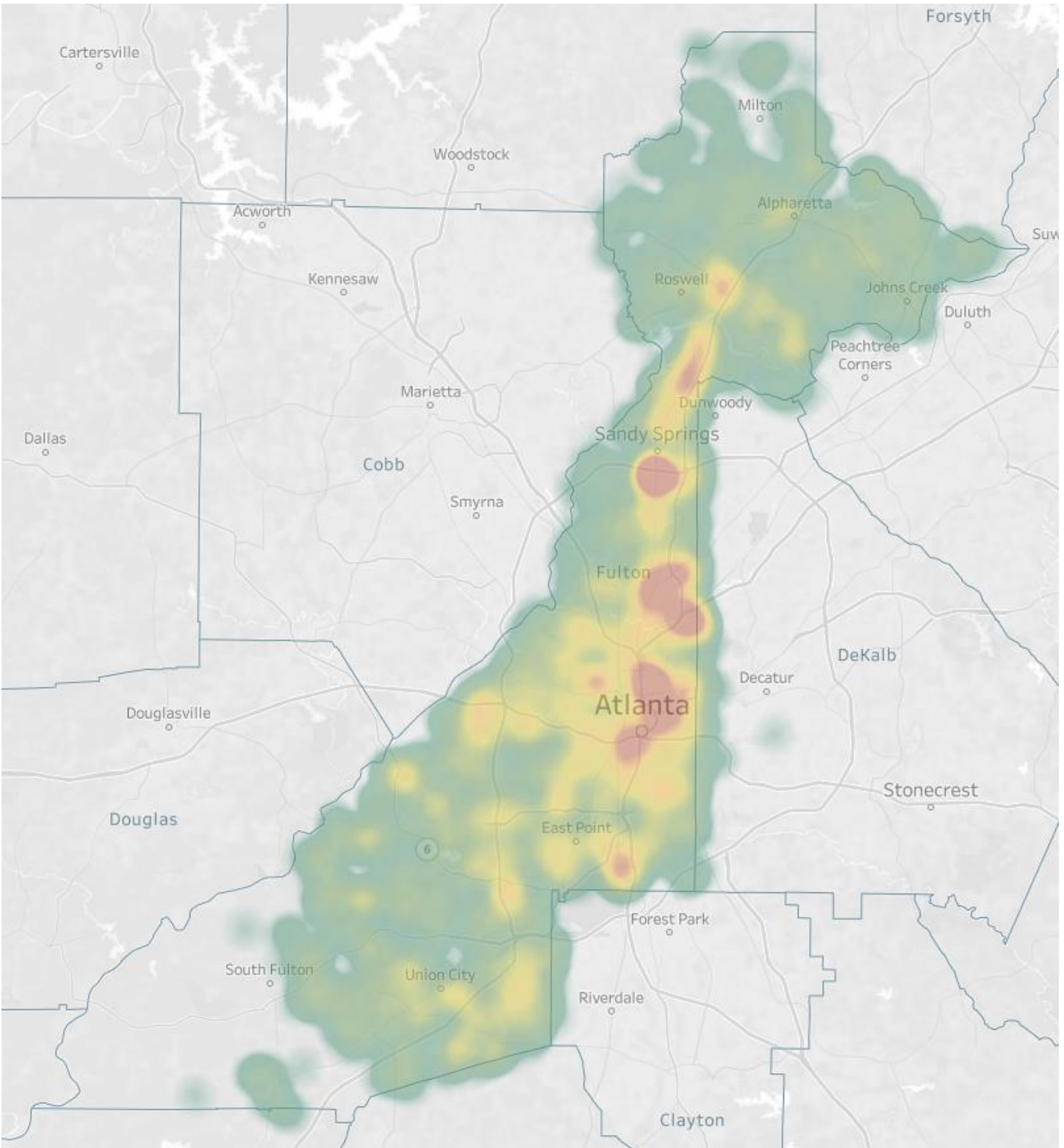
<sup>1</sup>**New cases:** Cases diagnosed in most recent 28 days (based on reported dates of positive sample collection). To allow for lag in reporting results of new diagnoses from samples collected in the most recent week, data used for incident diagnoses analyses were moved back by one week. <sup>2</sup>**Cumulative diagnosis rate:** Population estimates from US Census Bureau used to calculate cumulative diagnoses rate. All rates shown are per 100,000 persons. <sup>3</sup>**Percent change:** These reflect the percentage increase or decrease in new diagnoses between the 14 days preceding the most recent 7 days and the 14 days preceding that. Changes in cities with less than 10 cases in both 2 week intervals are not reported. <sup>4</sup>**Incidence Rate:** Rate of new diagnoses in the recent past 14 days. \*\*Data cleaning (either during case interviews or address geo-coding) may lead to reassignment of few cases from one territory to another based on their corrected addresses. These may appear as “decreases” when compared to the previous day’s count. These do not reflect errors in the data collection or analysis process but only reflect the minor day-to-day fluctuations in case counts that arise in an evolving public health database like COVID’s. **Note:** Sharp increases in territorial COVID case counts often reflect new cases diagnosed at long term care facilities located in those territories during facility-wide /mass screening events **All data reported are preliminary and subject to change.**

Fig. 3. Incident &amp; Cumulative Diagnoses Rates for COVID-19 by City (6/26/20)



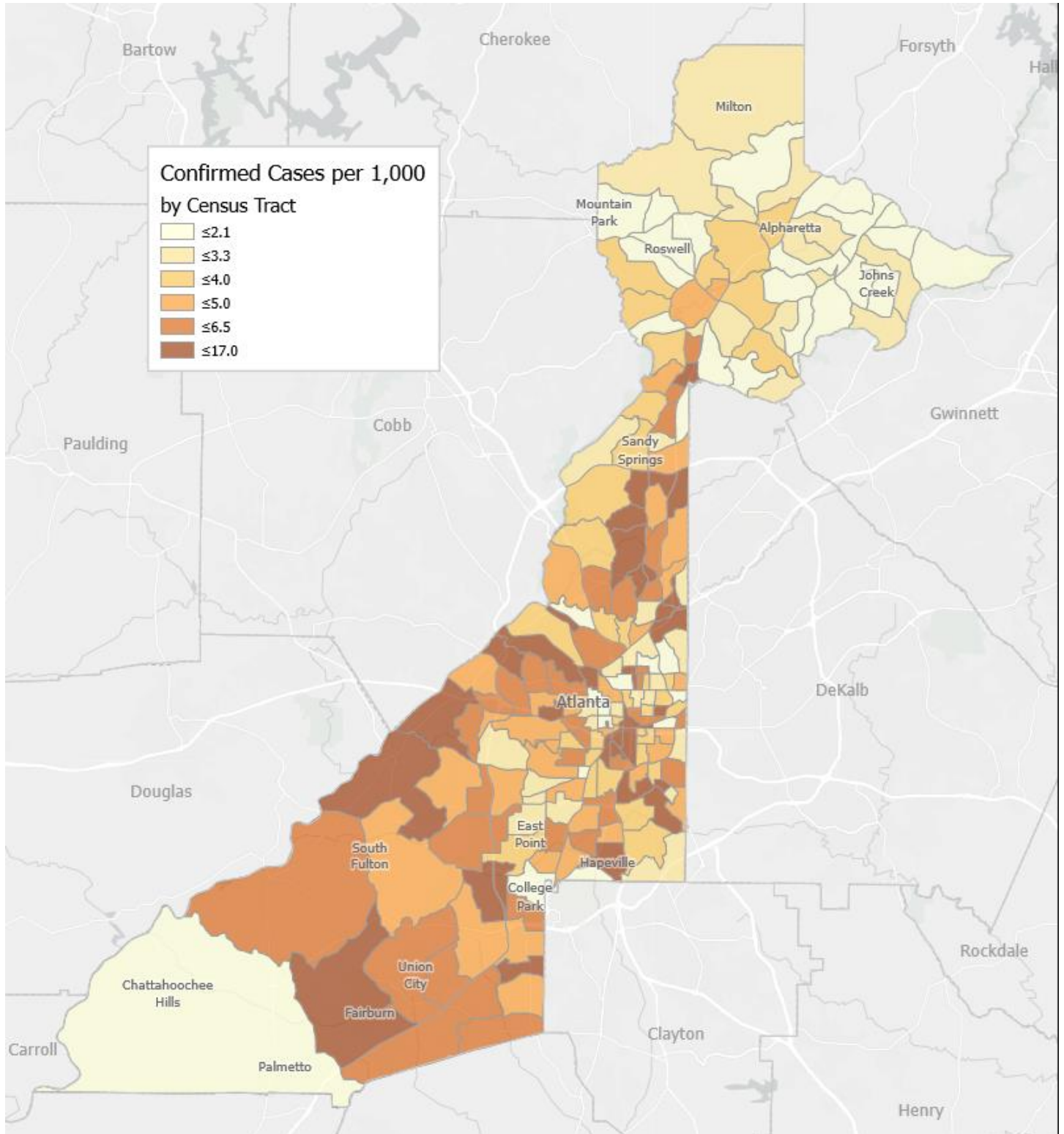
\*Rates shown are per 100,000 persons | **Note:** Mass testing in specific locations (e.g. long term care facilities) may cause sharp increases in the cumulative rate of COVID-19 diagnosis in those territories. All data shown are preliminary and are subject to change as testing results get updated.

Fig. 4. Density Map of COVID-19 Cases in Fulton County (6/26/20)



NB. Data used excludes the outbreak-related cases diagnosed at long-term care facilities and reflects the current geographical distribution of COVID19 diagnoses in the general Fulton County community.

Fig. 5. COVID-19 Diagnosis Rates in Fulton County by Census Tract (6/26/2020)



\*Rates shown are per 1,000 populations.

NB. Data used excludes the outbreak-related cases diagnosed at long-term care facilities and reflects the current geographical distribution of COVID19 diagnoses in

## COVID-19 CASE COUNTS BY ZIP CODE

	Prior (6/24/20)	Current Total (6/26/20)		New Cases (Period: 5/22/20 – 6/19/20) <sup>1</sup>		
	Count	Count	%	1st 14 days	Last 14 d.	% change <sup>2</sup>
30331	447	447	7.1%	27	72	↑ 166.7%
30318	361	339	5.4%	48	67	↑ 39.6%
30349	324	313	5.0%	32	43	↑ 34.4%
30213	240	225	3.6%	24	43	↑ 79.2%
30315	186	177	2.8%	14	29	↑ 107.1%
30344	174	173	2.8%	14	31	↑ 121.4%
30311	174	173	2.8%	<10	42	↑ 425.0%
30342	288	258	4.1%	45	55	↑ 22.2%
30314	214	208	3.3%	16	14	↓ 12.5%
30310	197	156	2.5%	46	26	↓ 43.5%
30308	97	104	1.7%	<10	19	↑ 850.0%
30022	154	143	2.3%	24	41	↑ 70.8%
30327	117	101	1.6%	22	17	↓ 22.7%
30004	129	121	1.9%	15	33	↑ 120.0%
30309	165	165	2.6%	14	39	↑ 178.6%
30076	141	138	2.2%	12	51	↑ 325.0%
30291	245	236	3.8%	19	33	↑ 73.7%
30350	166	149	2.4%	25	60	↑ 140.0%
30075	199	197	3.1%	12	57	↑ 375.0%
30328	143	136	2.2%	18	39	↑ 116.7%
30316	56	51	0.8%	10	11	↑ 10.0%
30312	260	258	4.1%	<10	34	↑ 385.7%
30005	68	68	1.1%	<10	20	↑ 300.0%
30305	189	145	2.3%	55	46	↓ 16.4%
30306	53	50	0.8%	<10	<10	-
30324	193	164	2.6%	41	55	↑ 34.1%
30337	94	87	1.4%	<10	<10	-
30009	62	55	0.9%	10	13	↑ 30.0%
30313	46	46	0.7%	<10	10	↑ 400.0%
30326	39	39	0.6%	<10	12	↑ 200.0%
30097	54	51	0.8%	<10	14	↑ 250.0%
30354	102	82	1.3%	23	38	↑ 65.2%
30303	43	40	0.6%	<10	<10	-
30339	17	15	0.2%	<10	<10	-
30268	23	23	0.4%	<10	<10	-
30307	24	24	0.4%	<10	<10	-
30319	35	34	0.5%	<10	<10	-
30336	31	25	0.4%	<10	12	↑ 100.0%
30296	13	12	0.2%	<10	<10	-
30363	11	<10	0.1%	<10	<10	-
30301	<10	<10	<0.1%	0	<10	-
30345	11	11	0.2%	<10	<10	-
31131	<10	<10	<0.1%	0	0	-
30023	<10	<10	<0.1%	0	0	-
30080	<10	<10	<0.1%	0	0	-
30135	<10	<10	<0.1%	0	0	-
30138	<10	<10	<0.1%	0	0	-
30139	-	-	-	0	0	-
30321	<10	<10	<0.1%	<10	<10	-
30340	12	21	0.3%	<10	11	↑ 1000.0%
30341	16	15	0.2%	<10	<10	-
30358	<10	<10	<0.1%	0	0	-

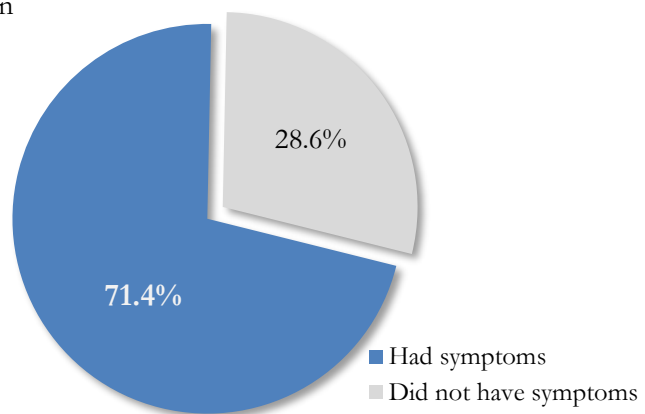
30374	20	19	0.3%	<10	<10	-
30606	<10	<10	<0.1%	0	0	-
31150	<10	<10	<0.1%	0	0	-
30024	<10	<10	<0.1%	0	<10	-
30098	-	-	-	0	0	-
30334	<10	<10	<0.1%	<10	0	↓ 100.0%
30338	<10	<10	<0.1%	<10	<10	-
Unknown	300	957	15.2%	28	48	-

<sup>1</sup>**New cases:** Cases diagnosed in most recent 28 days (based on reported dates of positive sample collection). To allow for lag in reporting results of new diagnoses from samples collected in the most recent week, data used for incident diagnoses analyses were moved back by one week. <sup>2</sup>**Percent change:** These reflect the percentage increase or decrease of new diagnoses between the 14 days preceding the past 7 days and the 14 days preceding that. Changes in ZIP codes with less than 10 cases in both 2 week intervals are not reported\*\*Data cleaning (either during case interviews or address geo-coding) may lead to reassignment of few cases from one territory to another based on their corrected addresses. These may appear as “decreases” when compared to the previous day’s count. These do not reflect errors in the data collection or analysis process but only reflect the minor day-to-day fluctuations in case counts that arise in an evolving public health database like COVID’s. **Note:** Sharp increases in territorial COVID case counts often reflect new cases diagnosed at long term care facilities located in those territories during facility-wide /mass screening events **All data reported are preliminary and subject to change.**

### REPORTING SYMPTOMS AMONG PERSONS DIAGNOSED WITH COVID-19 IN FULTON

People with COVID-19 have reported a wide range of symptoms ranging from mild symptoms to severe illness. Symptoms may appear 2-14 days after exposure to the virus. Symptoms reported include: cough, shortness of breath/difficulty breathing, fever, chills, repeated shaking with chills, muscle pain, headache, sore throat, new loss of taste or smell – Centers for Disease Control and Prevention (CDC) <https://www.cdc.gov/coronavirus/2019-ncov/symptoms-testing/symptoms.html>

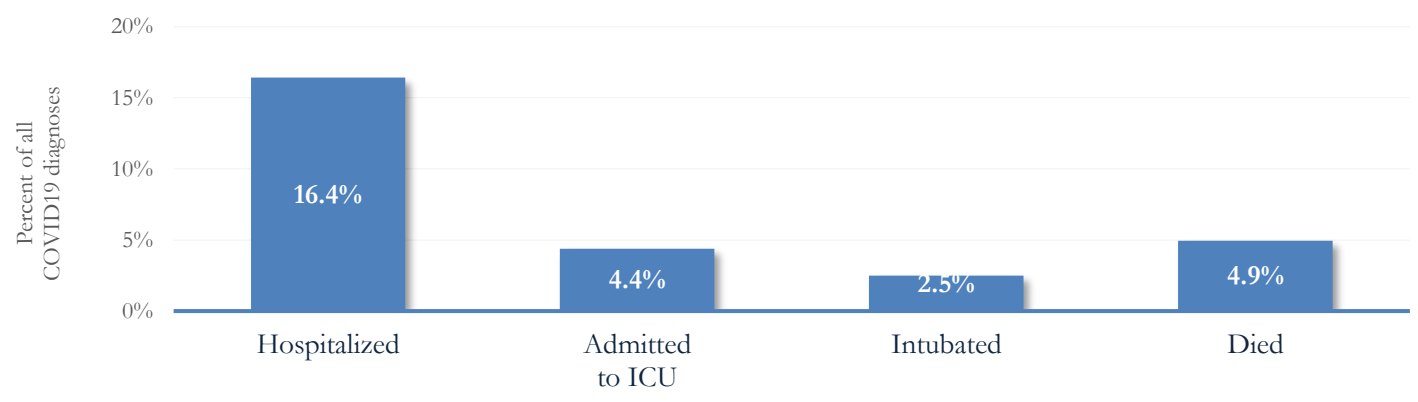
Fig. 6. Proportion reporting Symptoms in Fulton County (6/26/20)



\*\*\*COVID-19 cases who have been case interviewed or had medical charts reviewed as at 6/26/20 only\*\*\*

### COVID-19 HOSPITALIZATIONS, ICU ADMISSIONS AND DEATHS IN FULTON

Fig. 7. Hospitalizations, ICU Admissions and Deaths among COVID-19 Diagnoses in Fulton County (6/26/20)



## DEMOGRAPHIC DISTRIBUTIONS – COVID 19 DIAGNOSES AND DEATHS IN FULTON

Distribution of COVID-19 diagnoses in Fulton County by Fulton Region – 6/26/20

	North Fulton Cities <sup>1</sup> Count (%)	Atlanta Count (%)	South Fulton Cities <sup>2</sup> Count (%)	Unknown City Count (%)	All Fulton Count (%)
<b>Total COVID-19 cases</b>	1432	2885	1358	610	6285
<b>Gender:</b> Female	676 (47.2%)	1406 (48.7%)	758 (55.8%)	307 (50.3%)	3147 (50.1%)
Male	728 (50.8%)	1426 (49.4%)	560 (41.2%)	293 (48.0%)	3007 (47.8%)
Unknown	28 (2.0%)	53 (1.8%)	40 (2.9%)	10 (1.6%)	131 (2.1%)
<b>Age:</b> <15	44 (3.1%)	38 (1.3%)	24 (1.8%)	20 (3.3%)	126 (2.0%)
15-24	215 (15.0%)	316 (11.0%)	116 (8.5%)	53 (8.7%)	700 (11.1%)
25-34	239 (16.7%)	571 (19.8%)	193 (14.2%)	135 (22.1%)	1138 (18.1%)
35-44	263 (18.4%)	448 (15.5%)	229 (16.9%)	100 (16.4%)	1040 (16.5%)
45-54	242 (16.9%)	364 (12.6%)	232 (17.1%)	95 (15.6%)	933 (14.8%)
55-64	196 (13.7%)	382 (13.2%)	226 (16.6%)	74 (12.1%)	878 (14.0%)
65-74	119 (8.3%)	364 (12.6%)	160 (11.8%)	43 (7.0%)	686 (10.9%)
≥75	112 (7.8%)	387 (13.4%)	175 (12.9%)	85 (13.9%)	759 (12.1%)
Unknown	<10	15 (0.5%)	<10	<10	25 (0.4%)
<b>Race:</b> Asian, NH	59 (4.1%)	35 (1.2%)	<10	13 (2.1%)	110 (1.8%)
Black, NH	172 (12.0%)	1491 (51.7%)	909 (66.9%)	209 (34.3%)	2781 (44.2%)
White, NH	453 (31.6%)	519 (18.0%)	97 (7.1%)	107 (17.5%)	1176 (18.7%)
Hispanic	301 (21.0%)	206 (7.1%)	77 (5.7%)	76 (12.5%)	660 (10.5%)
Other, NH	38 (2.7%)	58 (2.0%)	16 (1.2%)	17 (2.8%)	129 (2.1%)
Unknown	409 (28.6%)	576 (20.0%)	256 (18.9%)	188 (30.8%)	1429 (22.7%)

<sup>1</sup>Includes all Fulton County cities north of Atlanta metro (Alpharetta, Milton, Johns Creek, Roswell, Sandy Springs, Mountain Park ) <sup>2</sup>Includes all cities south of Atlanta (College Park, Chattahoochee Hills, East Point, Hapeville, Palmetto, South Fulton, Fairburn, Union City). **Note:** All data reported are preliminary and subject to change.

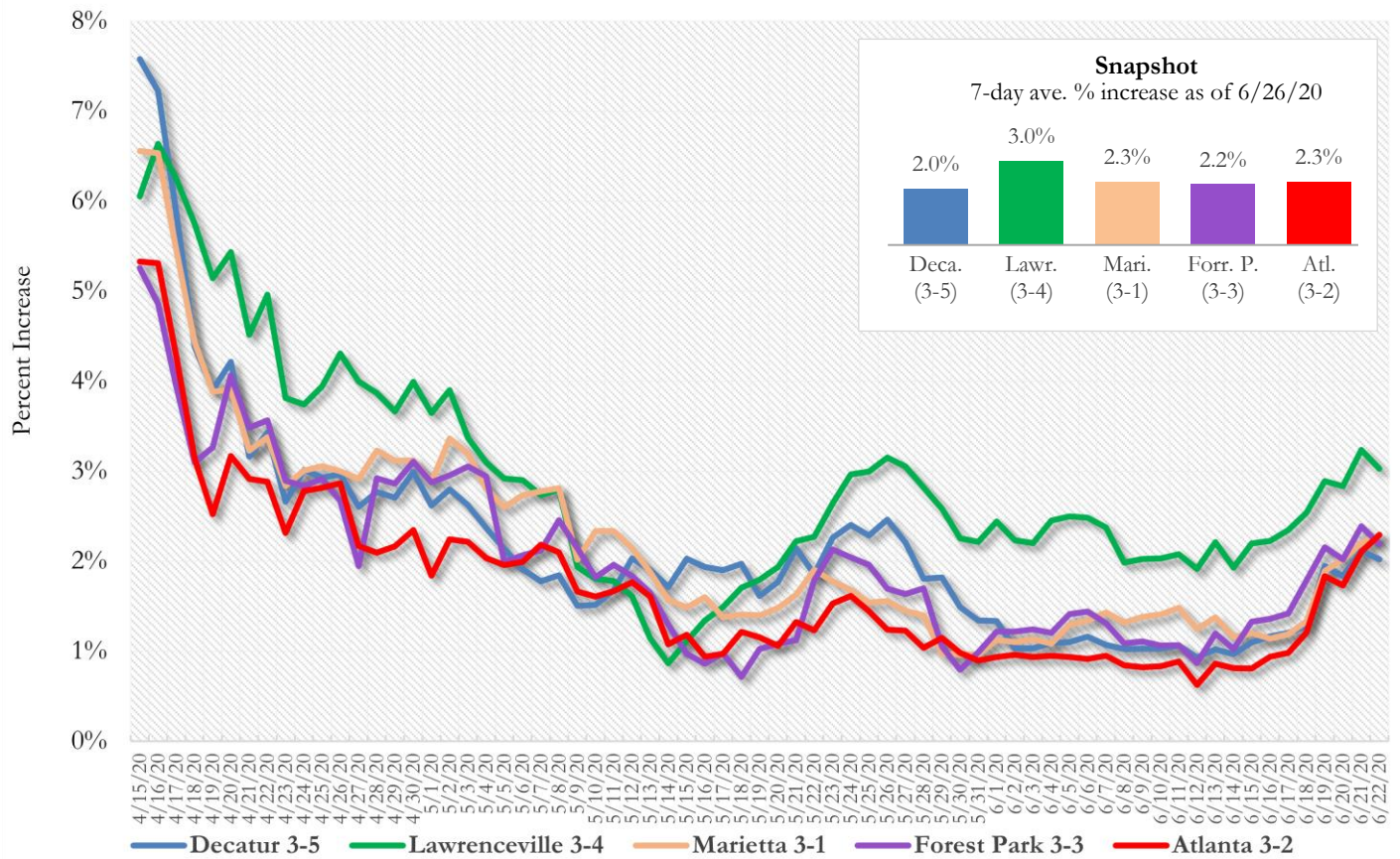
Distribution of COVID-19 Deaths in Fulton County by Fulton Region – 6/26/20

	North Fulton Cities <sup>1</sup> Count (%)	Atlanta Count (%)	South Fulton Cities <sup>2</sup> Count (%)	Unknown City Count (%)	All Fulton Count (%)
<b>Total COVID-19 deaths</b>	40	149	94	28	311
<b>Gender:</b> Female	14 (35.0%)	59 (39.6%)	50 (53.2%)	17 (60.7%)	140 (45.0%)
Male	26 (65.0%)	90 (60.4%)	44 (46.8%)	11 (39.3%)	171 (55.0%)
Unknown	0	0	0	0	0
<b>Age:</b> <65	<10	25 (16.8%)	27 (28.7%)	<10	60 (19.3%)
65-74	<10	39 (26.2%)	24 (25.5%)	<10	72 (23.2%)
75-84	12 (30.0%)	43 (28.9%)	19 (20.2%)	<10	82 (26.4%)
≥85	17 (42.5%)	42 (28.2%)	24 (25.5%)	14 (50.0%)	97 (31.2%)
Unknown	0	0	0	0	0
<b>Race:</b> Asian, NH	0	<10	0	0	<10
Black, NH	<10	128 (85.9%)	81 (86.2%)	14 (50.0%)	229 (73.6%)
White, NH	31 (77.5%)	13 (8.7%)	10 (10.6%)	13 (46.4%)	67 (21.5%)
Hispanic	<10	<10	<10	<10	<10
Other, NH	0	<10	0	0	<10
Unknown	0	<10	0	0	<10

<sup>1</sup>Includes all Fulton County cities north of Atlanta metro (Alpharetta, Milton, Johns Creek, Roswell, Sandy Springs, Mountain Park ) <sup>2</sup>Includes all cities south of Atlanta (College Park, Chattahoochee Hills, East Point, Hapeville, Palmetto, South Fulton, Fairburn, Union City). **Note:** All data reported are preliminary and subject to change.

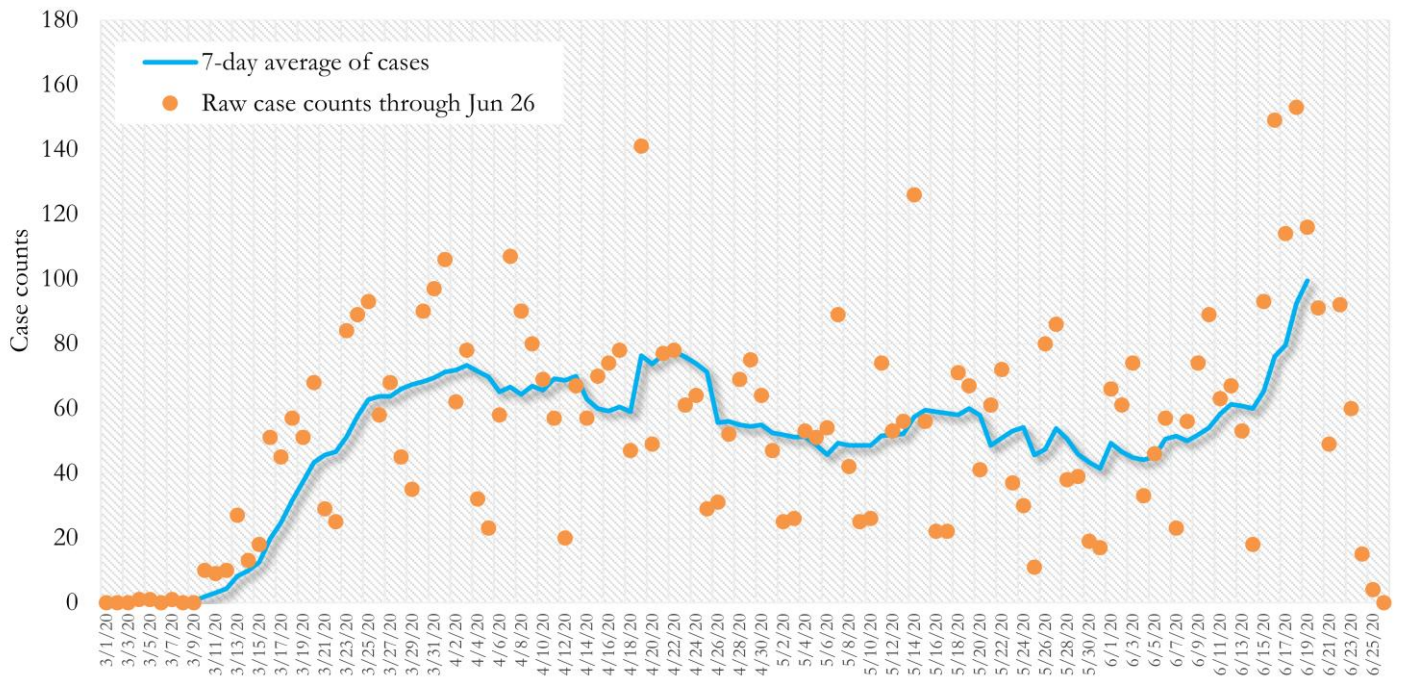
MORBIDITY AND MORTALITY TRENDS

**Fig. 8. Daily Percent Increase for Atlanta Metro Districts  
(Averaged over 7 days)**



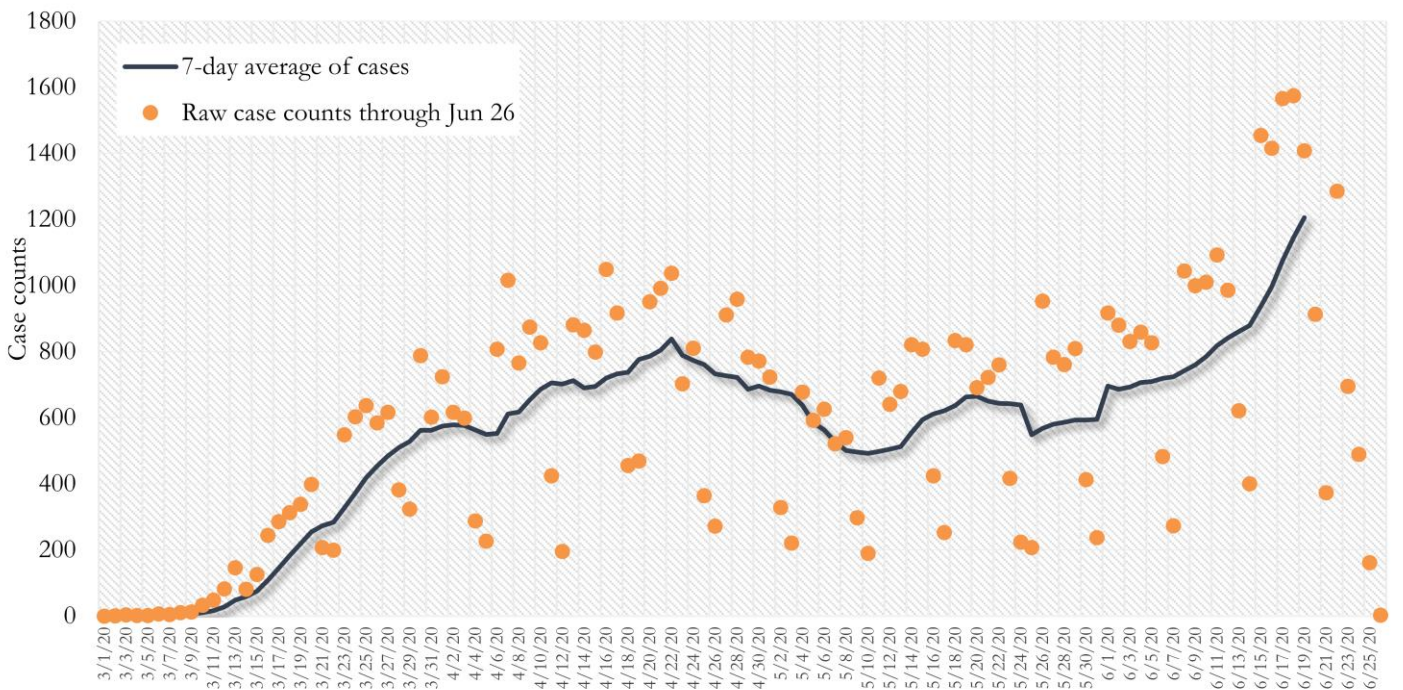


**Fig. 11. New COVID-19 Cases in Fulton County Daily (Averaged over 7 days)  
Mar 01, 2020 - Jun 19, 2020**



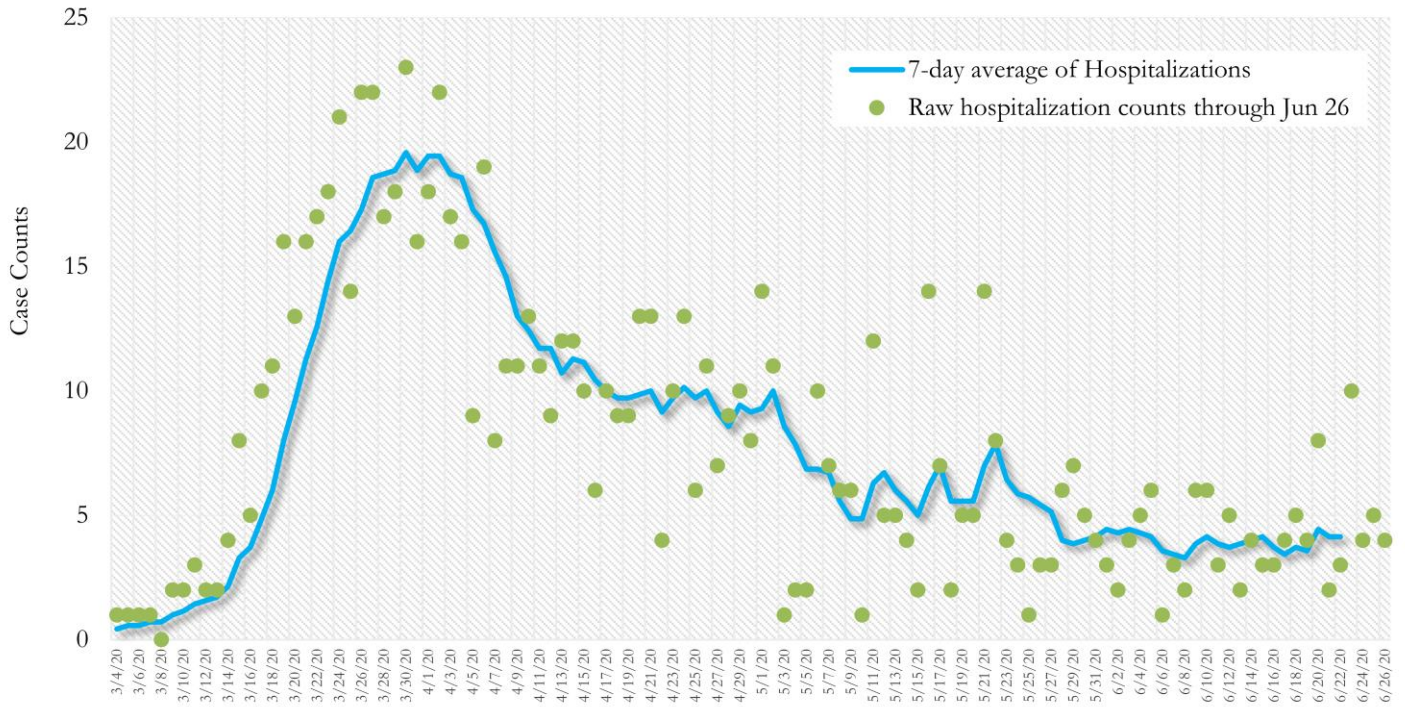
\*Date of collection of first positive sample used (report creation date used where sample collection date is missing).

**Fig. 10. New COVID-19 Cases in Georgia State Daily (Averaged over 7 days)  
Mar 01, 2020 - Jun 19, 2020**



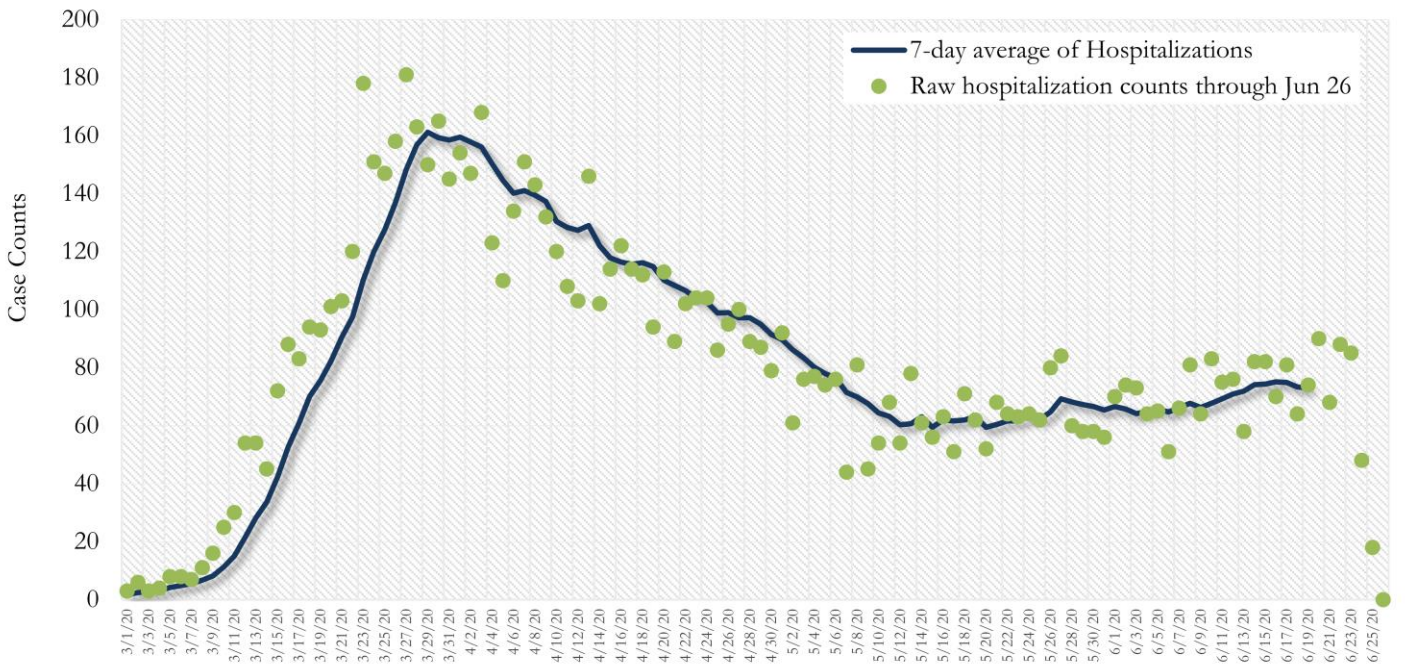
\*Date of collection of first positive sample used (report creation date used where sample collection date is missing).

**Fig. 11. COVID-19 Hospitalizations in Fulton County Daily (Averaged over 7 days)  
Mar 01, 2020 - Jun 19, 2020**



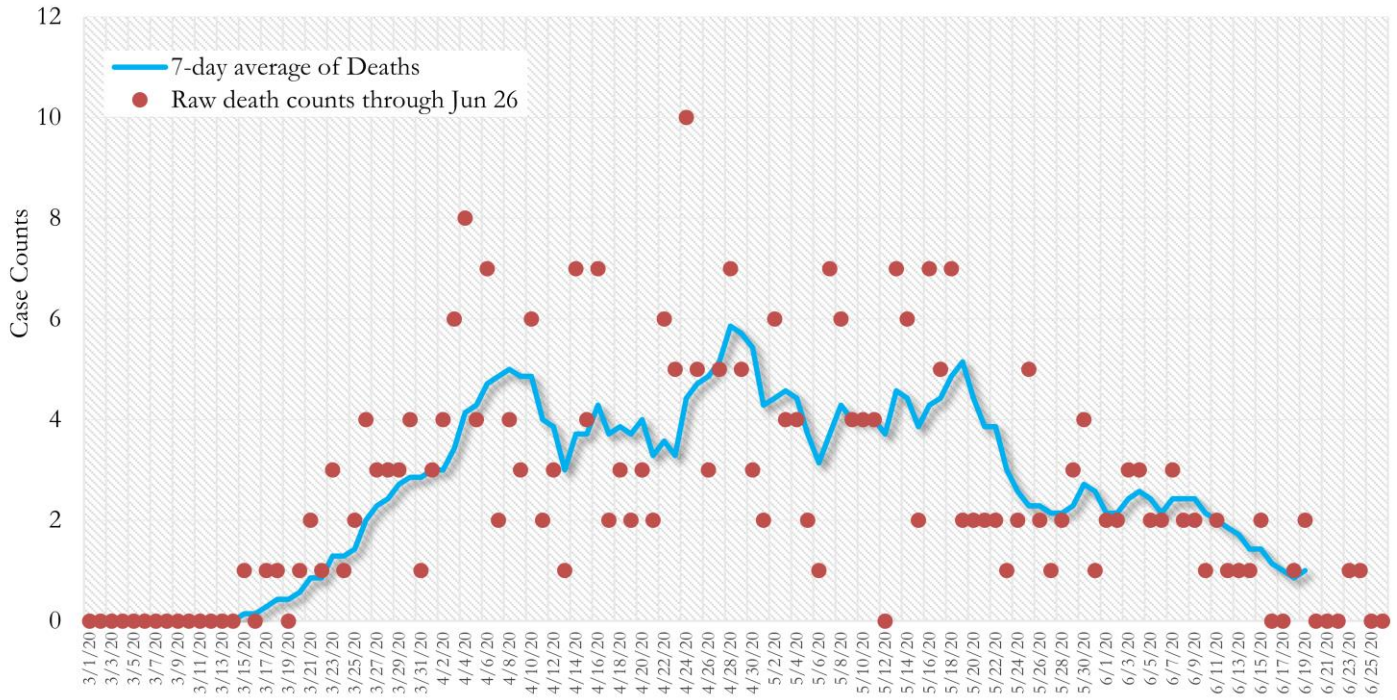
\*Date of collection of first positive sample used (report creation date used where sample collection date is missing).

**Fig. 12. COVID-19 Hospitalizations in Georgia State Daily (Averaged over 7 days)  
March 01, 2020 - Jun 19, 2020**



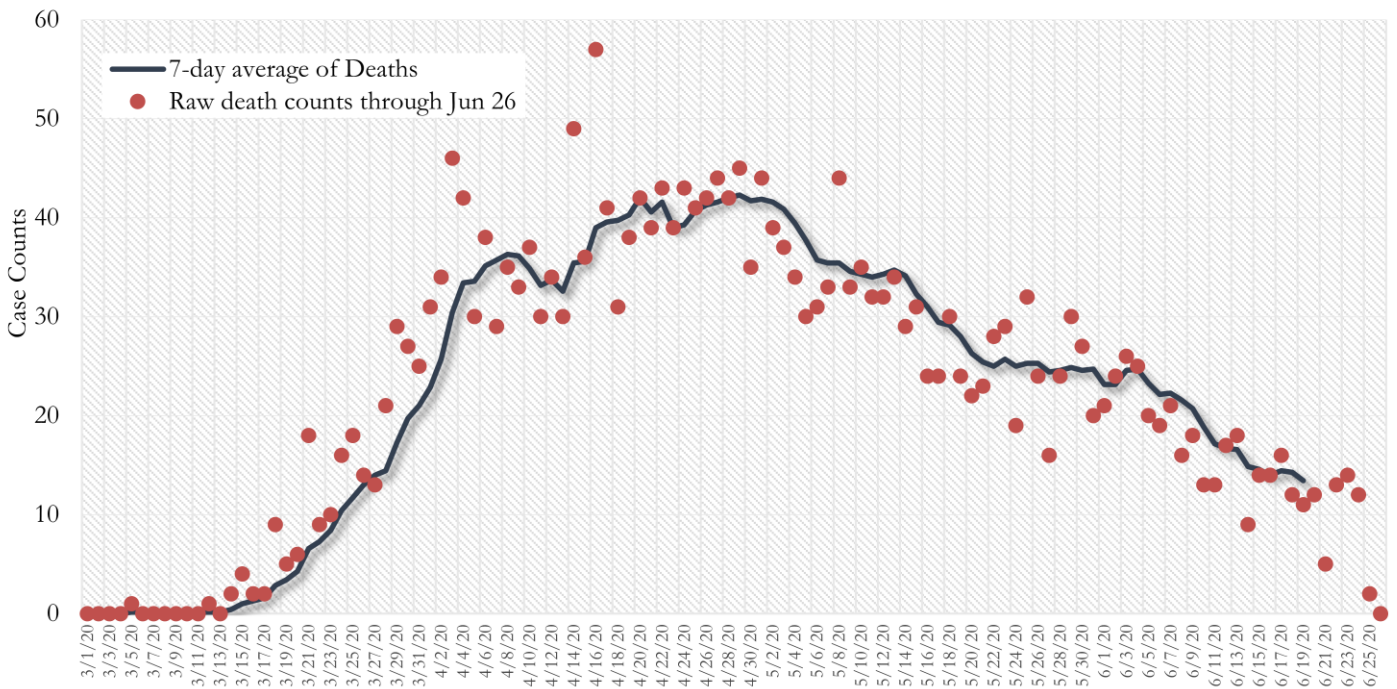
\*Date of collection of first positive sample used (report creation date used where sample collection date is missing).

**Fig. 13. COVID-19 Deaths in Fulton County Daily (Averaged over 7 days)**  
Mar 01, 2020 - Jun 19, 2020



\*Reported date of death used.

**Fig. 14. COVID-19 Deaths in Georgia State Daily (Averaged over 7 days)**  
Mar 01, 2020 - Jun 19, 2020



\* Reported date of death used.

## COVID-19 IN LONG-TERM CARE FACILITIES IN FULTON

Older persons (aged 65 years and older) and persons who live in nursing homes or other long-term care facilities seem to be at higher risk for developing more serious complications from COVID-19. Extra precautions are recommended for individuals within this risk groups – Centers for Disease Control and Prevention (CDC 2020) <https://www.cdc.gov/coronavirus/2019-ncov/need-extra-precautions/people-at-higher-risk.html>

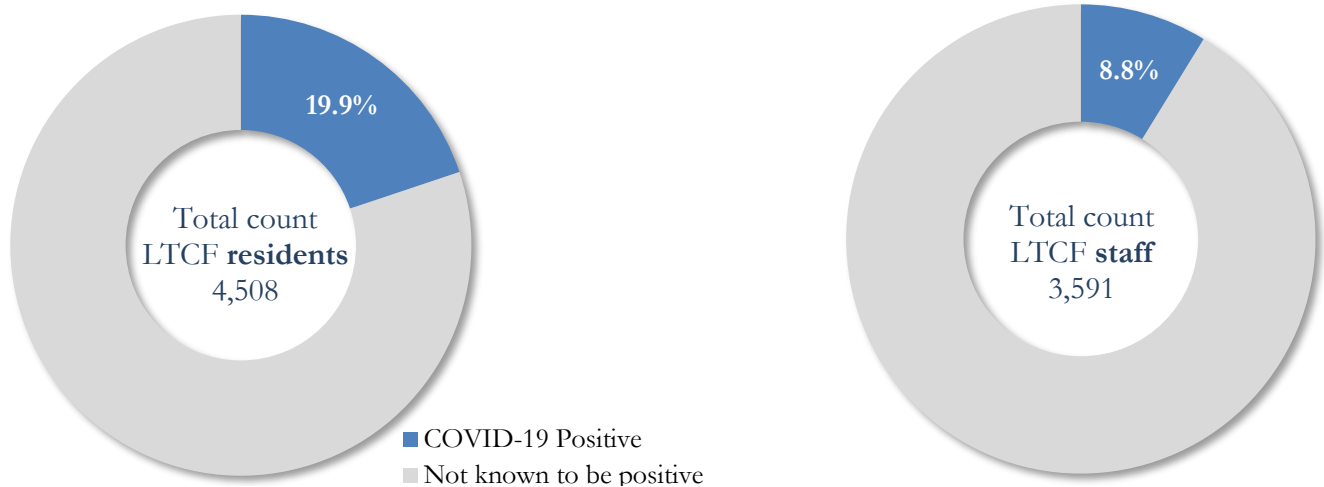
### COVID-19 Diagnoses and Deaths in Fulton County Associated with Long-Term Care Facilities (6/26/20)



\*\*\*LTCF → Long-term Care Facility (Includes residents and Staff) \*\*\*

**COVID-19 POSITIVITY:** COVID-19 testing is currently being provided at various long-term care facilities in Fulton County through the efforts of the Board of Health and the National Guard. See <https://dch.georgia.gov/> for a line listing of COVID-19 cases at all facilities in Georgia.

### COVID-19 Positivity at 47 reporting Long-Term Care Facilities (LTCF) in Fulton County (6/26/20)



### COVID-19 Cases, Hospitalizations, and Deaths among reporting Long-Term Care Facilities in Fulton County (6/26/20)

	LTCF Residents (n=4,508)			LTCF Staff (n=3,591)		
	Cases	Hospitalizations	Deaths	Cases	Hospitalizations	Deaths
<b>Average</b> (count per fac.) <sup>1</sup>	19	4	3	7	<1	<0.1
<b>Median</b> (count per fac.) <sup>1</sup>	2	3	1	2	0	0
<b>Lowest counts</b>	0	0	0	0	0	0
<b>Highest counts</b>	126	32	23	41	6	1
<b>Total Count</b>	<b>895 (19.9%)<sup>a</sup></b>	<b>189 (21.1%)<sup>b</sup></b>	<b>147 (16.4%)<sup>b</sup></b>	<b>315 (8.8%)<sup>a</sup></b>	<b>18 (5.7%)<sup>b</sup></b>	<b>1 (0.3%)<sup>b</sup></b>

<sup>a</sup> Percentage shown reflects proportion of total residents/staff tested who were positive (i.e. COVID-19 Positivity). | <sup>b</sup> Percentages shown are proportions of persons residents/staff diagnosed with COVID-19 who were hospitalized or died after diagnoses.